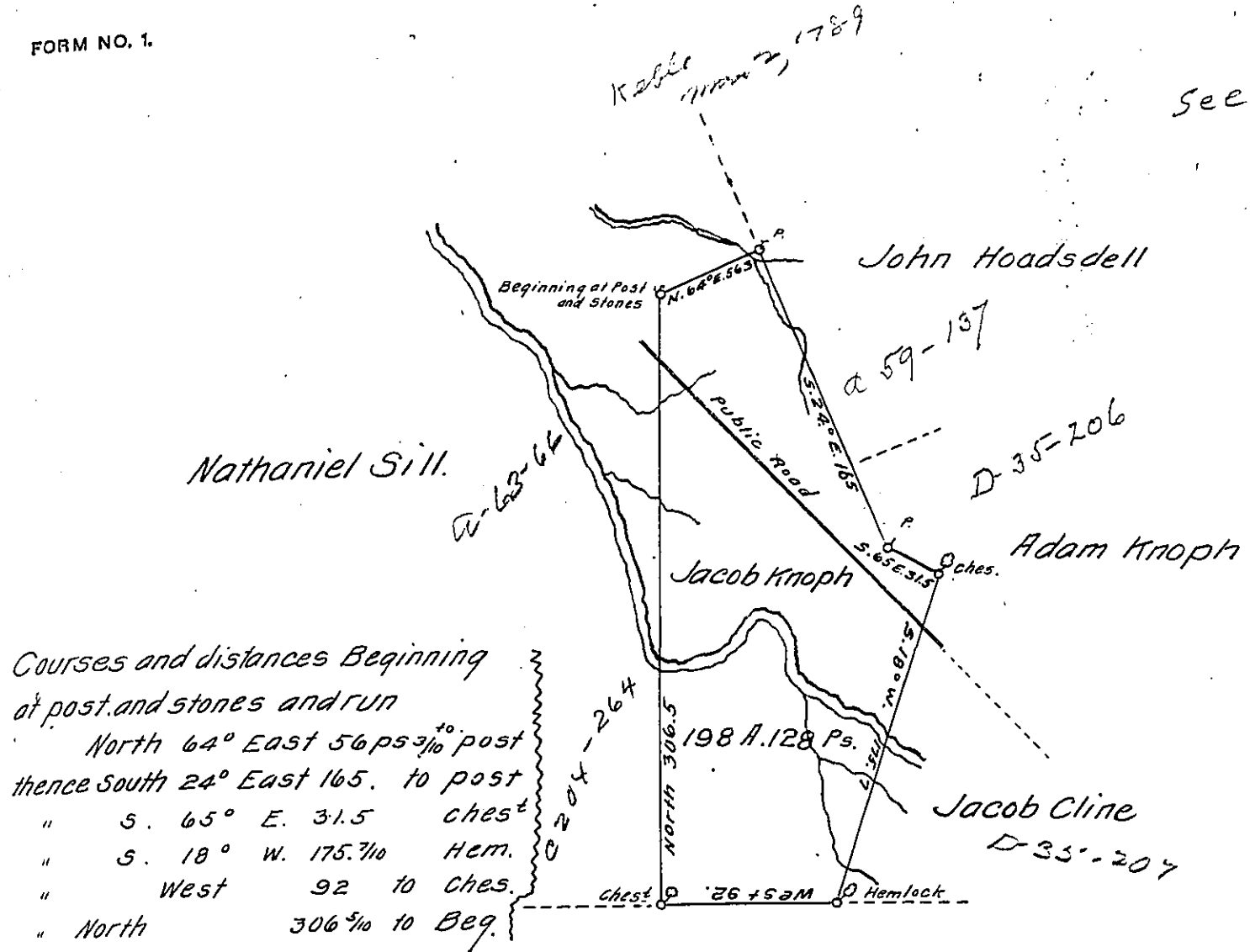


see A-63.66
N.G.



Courses and distances Beginning
at post and stones and run
 North 64° East 56 ps 3/10 post
 thence South 24° East 165. to post
 " S. 65° E. 31.5 chest
 " S. 18° W. 175.7/10 Hem.
 " West 92 to Ches.
 " North 306 5/10 to Beg.

Lancaster Land Company
 Lands.
 + 4810 -

Draft of a tract of land Situate in Limestone township Warren County. and
 South & East of the Allegheny River. Containing One Hundred and ninety
 eight Acres and One hundred and twenty eight perches and allowance
 (Part of Line obliterated) Surveyed 29th October A. D. 1836. for Jacob Knoph
 on a warrant granted to said Jacob Knoph. dated 8th day of September
 A. D. 1836.

Witness my hand and Seal the 29th day of October A. D. 1836.
 Andrew H. Ludlow. D. S.
 for Warren Co.

IN TESTIMONY that the above is a copy of the original remaining on file in
 the Department of Internal Affairs of Pennsylvania, made
 conformably to an Act of Assembly approved the 16th day of
 February, 1833, I have hereunto set my Hand and caused
 the Seal of said Department to be affixed at Harrisburg,
 this first day of March 1912.

Henry Hoover
 Secretary of Internal Affairs.